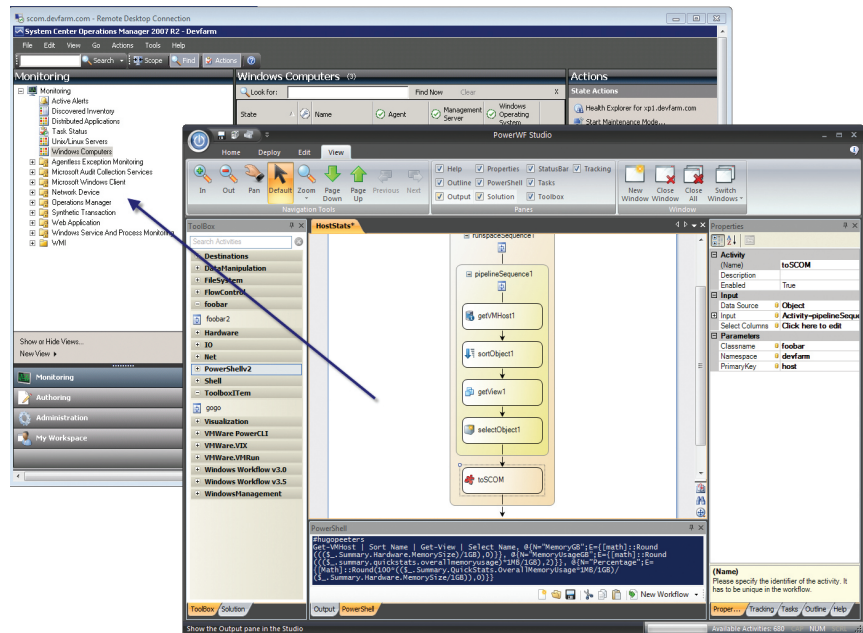


## Product Bulletin

*PowerWF Studio unleashes the potential of Microsoft® PowerShell and Windows® Workflow Foundation by providing a visual integrated development environment (IDE) that eliminates the need to write custom SCOM management packs and agents. By simply dragging and dropping activities onto the canvas in PowerWF Studio administrators can quickly and easily build SCOM agents that gather important system statistics and send the data to SCOM thereby reducing downtime, improving productivity, and decreasing maintenance costs.*

### Highlights

- Transform existing PowerShell scripts into SCOM agents in seconds.
- Publish workflow data into dynamically created WMI classes for consumption by any WMI-aware monitoring solution.
- Enable administrators to easily read workflows written in PowerWF and modify them without programming.
- Use workflows written with PowerWF to push data to multiple monitoring solutions (e.g. Perfmon and SCOM) simultaneously.



### Quickly Create SCOM Management Packs

Although Microsoft System Center Operations Manager (SCOM) is designed to provide end-to-end service management, it is only as good as the data it collects. Systems that don't report metrics to SCOM are blind spots in your IT infrastructure management that can lead to downtime. Microsoft and ISVs provide SCOM management packs for well-known applications. But if your application is home-grown, lacks market share, or existing management packs are insufficient, your only option has been to build a custom SCOM management pack. Not only is building SCOM Management Packs costly and error prone, it requires deep knowledge of your application, Windows Management Instrumentation, and SCOM data and process models.

PowerWF provides a visual integrated development environment that simplifies the creation of management packs by eliminating the need to write code. PowerWF's IDE is a central drag-and-drop environment for building, debugging, and deploying your SCOM Management Packs. Building Management Packs no longer requires deep knowledge of APIs, Windows Management Instrumentation, or the SCOM data and process models. Simply drag and drop activities onto the canvas and follow a simple deployment wizard to wire those activities into your organization's SCOM server.

## Benefits

*PowerWF users benefit from the ability to:*

### **Publish Custom WMI Data; Simplify Consumption in SCOM**

PowerWF™ Studio allows you to publish workflow data into dynamically created Windows® Management Instrumentation (WMI) classes for consumption by any WMI-aware monitoring system. You then have the option to use a simple wizard to quickly create SCOM management packs that allow SCOM to consume your custom data.

### **Leverage Existing PowerShell Scripts**

Most workflow products require users to develop workflows from scratch. PowerWF Studio has the unique ability to convert existing PowerShell Scripts into fully functional workflows. Users simply import scripts, display them visually, debug them within a visual IDE, and redeploy them to any destination. This makes it easy to modify, extend, and manage scripts to meet your specialized needs.

### **Eliminate Code**

PowerWF enables you to build automated solutions using a simple drag-and-drop graphical user interface. No coding is required to quickly create powerful workflows that automate your daily tasks. This reduces costs and hassles associated with developing and maintaining code, scripts, and batch files.

### **Reduce Errors**

Eighty percent of downtime is the result of human error. Automated management processes developed using PowerWF reduce latency in service delivery and the risk of human errors.

### **Increase Visibility**

While traditional scripting tools require complicated programming logic and vendor APIs, PowerWF's visual flowchart paradigm hides these complexities, allowing you to concentrate on your business processes and collaborate more effectively with stakeholders. It also reduces errors and speeds the process of developing workflows.

### **Improve Productivity**

Unlike traditional scripting tools, PowerWF gives you a uniform methodology for developing your business processes and a similar look-and-feel for all workflows. This consistent programming model improves productivity and decreases maintenance costs.

### **Decrease Maintenance Costs**

Because workflows are represented visually to the developer as flowcharts and are coupled with built-in annotation, your scripts are essentially self-documented, making them easy to understand. This helps you reduce the 80% of your IT budget you spend maintaining existing systems, making resources available for new IT initiatives.

### **Protect your Investment**

Whether you need to bring a Legacy application into Workflow and Powershell or export a Workflow or Powershell solution to a Legacy environment, PowerWF provides the capabilities you need to get the job done.

## Features

*Key PowerWF capabilities include:*

### **Activity Packs**

In PowerWF, more than 650 activities are available to manage your VMware® virtual infrastructure. The VMware Activities in the activity packs are the building blocks that allow you to quickly develop complex workflows that automate virtual machine operations and guests within the virtual machines. These VMWare activities coupled with Core Activity Packs makes it easy to manage your OS and file systems, monitor and push data on the network, scrape output from both local and remote shell commands, visualize data in several easy to read from dialogs, manipulate data to lubricate data flow, and more.

- File System
- Network Activity Library
- Shell Commands
- Visualization
- Windows Management
- PowerShell v1.0
- PowerShell v2.0
- VMware VIX libraries
- PowerCLI

### **PowerWF Agent**

PowerWF Agent, coupled with the PowerWF scheduling engine, allows you to schedule recurring tasks to run in the background via a Windows Service. This functionality allows you to:

- Monitor your running workflows to gain visibility into the operations of your agents, including executions, errors, and results.
- Easily automate jobs, whether you need to execute your workflow once a month, every Friday night or every 5 minutes.
- Publish all the available metrics from the running workflow via Windows Management Interface (WMI) to support external application monitors, such as Microsoft's System Center Operation Manager (SCOM).



Devfarm Software

2008 Altom Ct., St. Louis, MO 63146  
314-590-5800 | sales@devfarm.com  
www.powerwf.com | Twitter:devfarm